

USER MANUAL CAROTID SIMULATOR

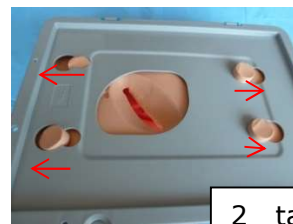


1

- 1 open the box, content:
- 1 head sculpture
 - 1 connector carotid-inlay/pump
 - 1 red foam-base
 - 1 aluminium – place holder
 - 1 pump with control unit



2

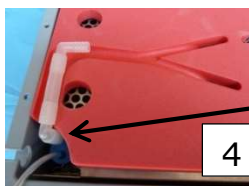
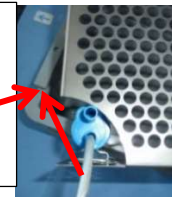


- 2 take all parts out of the box



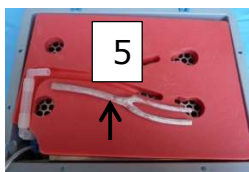
3

- 3 turn the aluminum place holder and push the pump into the metal clamp. Place the alu – placeholder with the pump in that direction into the box, that the cord can be lead out of the box



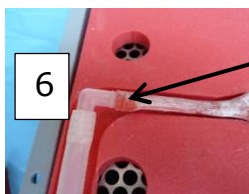
4

- 4 lay down the red foam onto the aluminium place holder, so, that the thick end of the track directs to the pump.



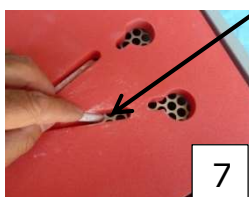
5

- 5 place the carotid – inlay into the track of the red foam, you may have to shorten the carotid somewhat at the thick end



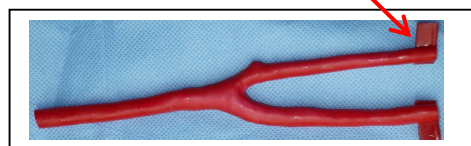
6

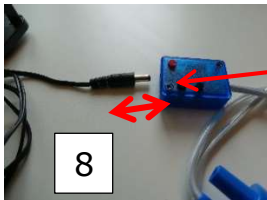
- 6 pull the carotid – inlay over the connector and fix it with a cable tie



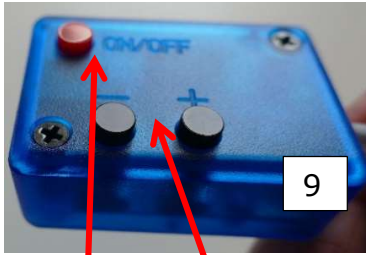
7

- 7 push the „flag“ of the interna and externa into a hole and fill the box with approx. 1.5 l (0.5 Gallon) of water





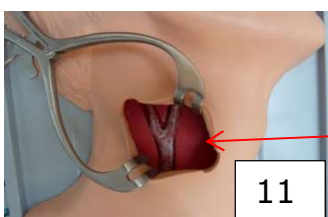
8 connect the slim plug of the power supply to the control unit and choose the plug matching your electrical system, then connect it to the electrical power source



9 this control unit does start/stop the pump (red button: on/off)
With the - button you may reduce the pump performance, while you can increase the performance by putting the + button
If you push down both buttons - and + at the same time, your pump will change to the vein modus (continuous flow), when you push down both buttons again, your pump will change back to the pulsatile modus
Once you pulled out the electric wire, the pump control unit will fall back into its default setting: pulsatile modus of about 70% of its maximum performance



10 place the head sculpture on the top of the box by sliding the silicone knobs into the leads



11 close the cover, lock it and apply the retractor, now start the pump.

IMPORTANT INFORMATION

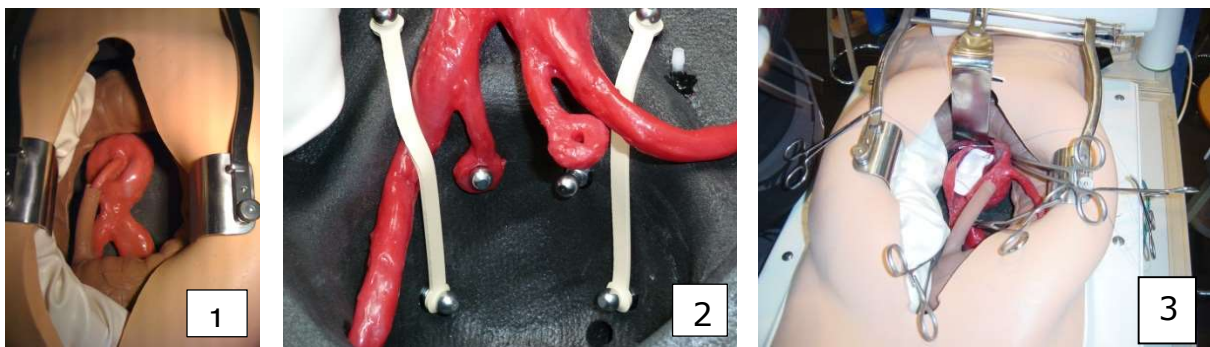
1. the Pump shall never run dry (noisy): immediately put it off or fill water into the model, until the noise is gone
2. after usage, dismantle the model into its single parts and let it dry. If you store the model undried and wet, mold will destroy it. This process will be irreversible.
3. Leave the carotid - pump connector always on the pump and within the model box
4. the pump with control unit could remain within the model box too. So you will keep everything together.
5. The 12 months warranty is only valid with the correct usage of the model

All parts/pieces are manufactured in Switzerland.
They have been used successfully at the VASCULAR INTERNATIONAL hands-on courses and UEMS exams.

All parts/pieces may be repurchased and replaced.

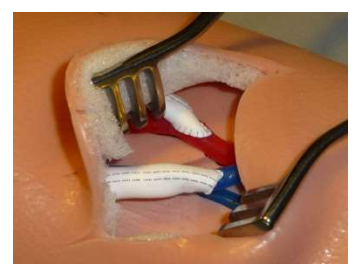
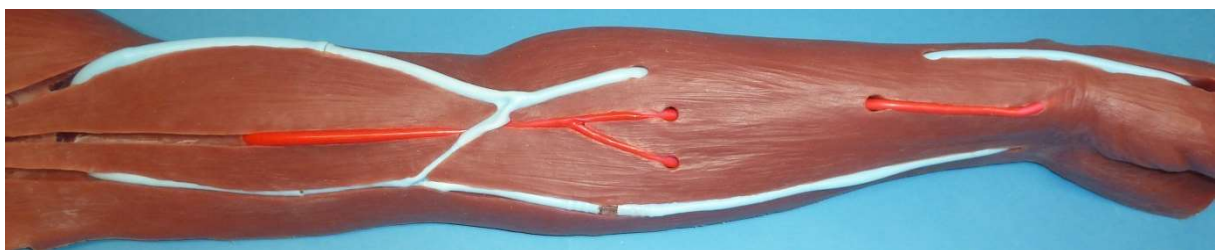
Other VASCULAR INTERNATIONAL Simulators

Aortic model for „open aortic surgery“



- 1) aortic inlay, ready for the procedure
- 2) fixation below the bifurcation, all vessels can be anastomosed
- 3) situs aneurysm elimination

Arm model for access surgery



The-vi-box



Our latest skill trainer for a realistic procedure training
With: - large choice of lifelike arteries/veins & tissue pads
- pulsatile & continuous pumps
- power bank (power independent working)
- variable depths
- easy to prepare, handle, use, reload, clean & store

All VASCULAR INTERNATIONAL simulators work independently and everywhere. Filled with water, under pulsatile pressure, do they enable a life like training of vascular surgery techniques.

For more information go to www.the-vi-box.com